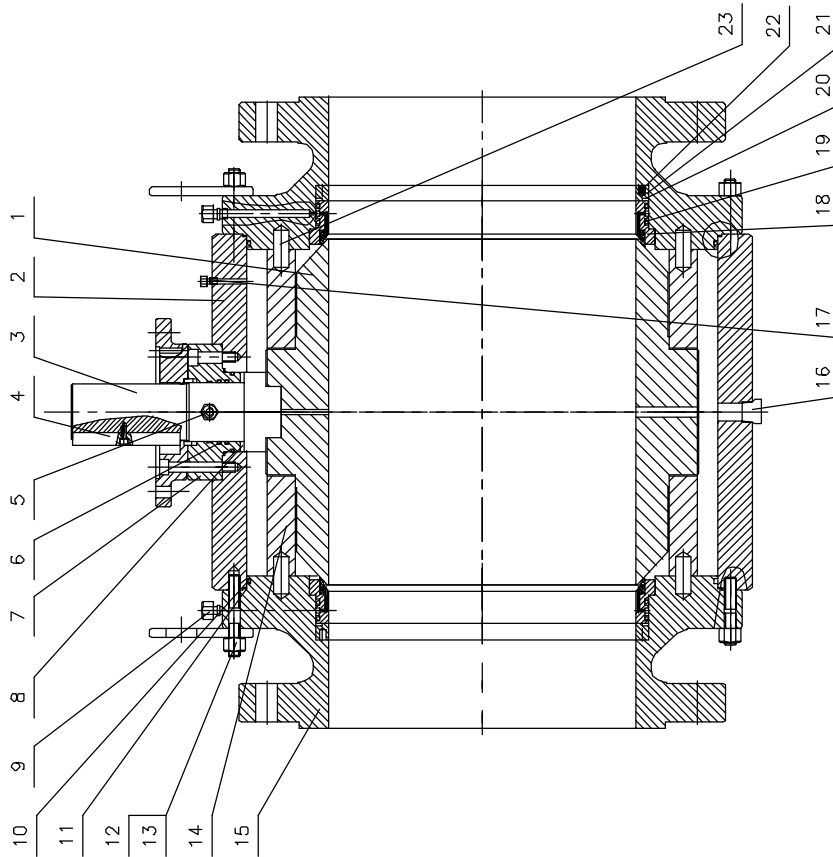


TOP ENTRY BALL VALVE

NO	Part Name	Qty	Material List
1	Ball	1	ASTM A216 WCB+0.003" ENP
2	Body	1	ASTM A216-WCB
3	Stem	1	ASTM A182-316
4	Key	1	ASTM A576-1045
5	Nipple	1	COMPONENT
6	O-Ring	2	VITON
7	Flange Gland	1	ASTM A105 ENP
8	Thrust Collar	1	PTFE
9	Grease Fitting	2	COMPONENT
10	O Ring	2	VITON
11	Seal Ring	2	GRAFOIL
12	Stud		ASTM A193 B7
13	Nut		ASTM A194 2H
14	Solid Plate	2	ASTM A105
15	Adapter	1	ASTM A216-WCB
16	Plug	1	ASTM A105 ENP
17	Drain	1	COMPONENT
18	Seat	2	ASTM A105 ENP-PTFE
19	O-Ring	2	VITON
20	Seal Ring	2	GRAFOIL
21	Pressure Ring	2	ASTM A105 ENP
22	Spring		ASTM A564 17-4PH
23	Cylindrical Pin	4	Carbon Steel

When mounting the valve again, the seat-holders have a system to regulate the compression of these to the ball, with this we have been able to arrange that the torque needed to operate the valve can be totally regulated, maintaining the tightness of the valve.

- VALVE ACCORDING TO API 6D
- END TO END ACCORDING TO ANSI B16.10
- FLANGED ACCORDING TO ANSI B16.5



The Top-entry Valve types have a major application when a frequent maintenance must be carried out and the valve can not be easily removed from the pipe as it is welded.

In this valve model, all the internals can be easily dismounted by loosening the bonnet of the valve on its upper side and removing the ball, the seat-holders and the shaft.